

Camp Map

Don't get lost in February's flavors



Flourless
Chocolate Cake
Feb 4th



Chocolate Covered
Strawberry
Feb 14th



Turtle Cheesecake
Feb 1st



Campfire S'mores
Feb 11th



Chocolatey
Strawberry
Feb 9th



Cherry Amaretto
Feb 5th



Raspberry
Mocha
Feb 2nd



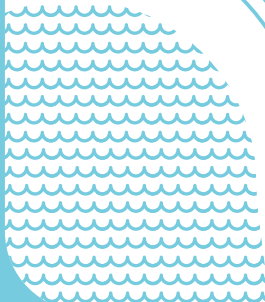
Salted Caramel
Chocolate Truffle
Feb 14th



Spicy
Strawberry
Goat Cheese
Feb 8th



Strawberry
Brownie
Feb 6th



Dark Chocolate
Mint
Feb 13th



Julie Ann's





Save the Date



Valentine's Day inspired flavors

- | | |
|--|---|
| 1st - Turtle Cheesecake | 9th - Chocolatey Strawberry |
| 2nd - Raspberry Mocha | 10th - Salted Caramel
Chocolate Truffle |
| 3rd - Black Tie White Dress | 11th - Campfire S'mores |
| 4th - Flourless Chocolate
Cake | 12th - Burnt Caramel Toffee |
| 5th - Cherry Amaretto | 13th - Dark Chocolate Mint |
| 6th - Strawberry Brownie | 14th - Chocolate Covered
Strawberry |
| 7th - Black Raspberry | |
| 8th - Spicy Strawberry Goat
Cheese | |

Fall in love with **Konrad's Wedding Cake Sundae** from **January 21st to February 15th**. Freshly baked wedding cake with layers of cake, chocolate mousse, raspberry preserves; covered in butter cream frosting with your choice of scoop.

Sing-along!

To the tune of "On Top of Old Smokey"

On top of a sundae,
capped off with whipped cream,
a shiny red cherry,
is this just a dream?

A cake slice from Konrads,
with layers divine,
I choose the custard,
it soon will be mine.

Should I share with my sweetheart?
It's the kind thing to do,
but my tastebuds are singin',
I think I'll get two...